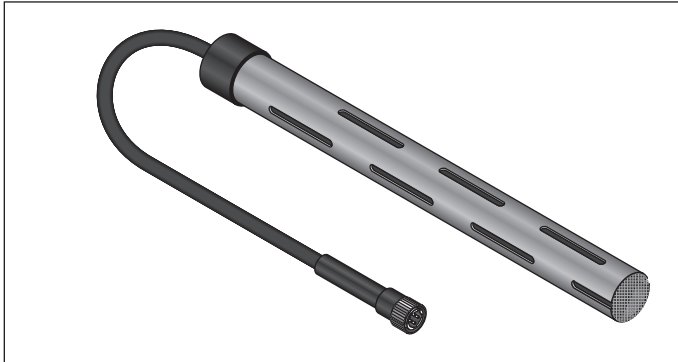




# TT-FFS TraceTek Fast Fuel Detection Probe

### General Information



The TraceTek® Fast Fuel Sensor is designed to quickly detect hydrocarbon fuels floating on water or collecting in a sump. The probe ignores the presence of water, but reacts to a thin film of fuel floating on the surface. In most cases, the TT-FFS will reset when removed from contact with the spill and the fuel is allowed to evaporate.

Reaction time for the probe is typically less than a few seconds for light or middle weight fuels such as gasoline, jet fuel, and diesel. It is also responsive to crude oil and some heavier weight fuels and heating oil, but becomes progressively slower as the fuel viscosity increases and the volatility decreases.

### Design Features

- Fast response to minimal amounts of spilled fuel
- Can be reset for multiple use
- Compatible with entire range of TraceTek Instruments
- Up to four TT-FFS probes can be used with modular branch connectors on a single TraceTek Locating Alarm Module
- Can be used with TT5000 Sensor Cable to form hybrid cable and probe leak detection systems
- Suitable for installation in hazardous area locations up to CID1 (Zone 0) with appropriate safety barrier
- Available with or without TraceTek metal connector
- Rugged Polypropylene housing for vertical mounting in sump or pipe stand

### Reset Procedure

See TT-FFS Care and Cleaning Instructions (H58307)

### General Notes - Do's and Don'ts

#### Do

- Connect sensor only to TraceTek modules
- Observe color code when connecting sensor wires (Red to Red, Black to Black, etc)
- Mount sensor in the vertical position in a sump or trench where it will contact leaks
- Seal the wire connections properly with the included kit components
- Make sure sensor slots are clear

#### Don't

- Connect directly to any voltage source
- Connect sensor to non-TraceTek equipment
- Drop sensor or cause it to be mechanically shocked
- Remove the protective screen or poke objects into the slots
- Expose sensor to contaminants such as pipe dope, PVC cement, solvents, or dirt

Tyco and TraceTek are trademarks of Tyco Thermal Controls LLC or its affiliates.

**Worldwide Headquarters**  
**Tyco Thermal Controls**  
307 Constitution Drive  
Menlo Park, CA 94025-1164  
USA  
Tel: (800) 545-6258  
Tel: (650) 216-1526  
Fax: (800) 527-5703  
Fax: (650) 474-7215  
info@tracetek.com  
[www.tracetek.com](http://www.tracetek.com)

**Important:** All information, including illustrations, is believed to be reliable. Users, however, should independently evaluate the suitability of each product for their particular application. Tyco Thermal Controls makes no warranties as to the accuracy or completeness of the information, and disclaims any liability regarding its use. Tyco Thermal Controls' only obligations are those in the Tyco Thermal Controls Standard Terms and Conditions of Sale for this product, and in no case will Tyco Thermal Controls or its distributors be liable for any incidental, indirect, or consequential damages arising from the sale, resale, use, or misuse of the product. Specifications are subject to change without notice. In addition, Tyco Thermal Controls reserves the right to make changes—without notification to Buyer—to processing or materials that do not affect compliance with any applicable specification.