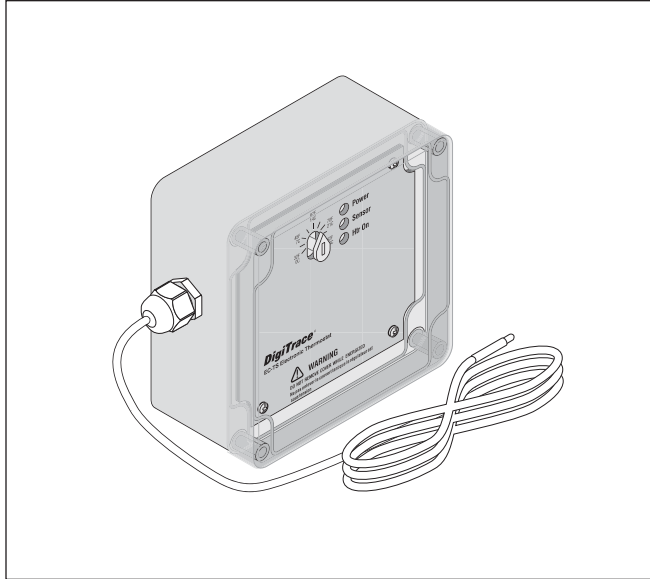


**EC-TS-AMB** Ambient sensing electronic thermostat

**EC-TS-10** Pipe or slab sensing electronic thermostat with 10' sensing lead

**EC-TS-25** Pipe or slab sensing electronic thermostat with 25' sensing lead

## Installation Instructions



### Description

The EC-TS electronic thermostat is an ambient, pipe, or slab sensing thermostat that is ideal for pipe freeze protection, flow maintenance, electric thermal storage and snow melting applications. The EC-TS can be used to control a single heat-tracing circuit or as a pilot to control a contactor switching multiple heat-tracing circuits. The temperature set point can be visually checked through the clear lid, as can the LED indicators for alarm, power and heating cable status. The stainless steel sensor makes it an ideal thermostat for snow melting applications that require an embedded sensor.

The set point range for these thermostats is between 30°F (–1°C) and 110°F (43°C). It operates at voltages between 100 to 277 Vac and switches current to 30 Amps.

For technical support call Tyco Thermal Controls at (800) 545-6258.

### Tools Required

- Large slotted screwdriver
- Small slotted screwdriver
- Needle nose pliers

### Approvals

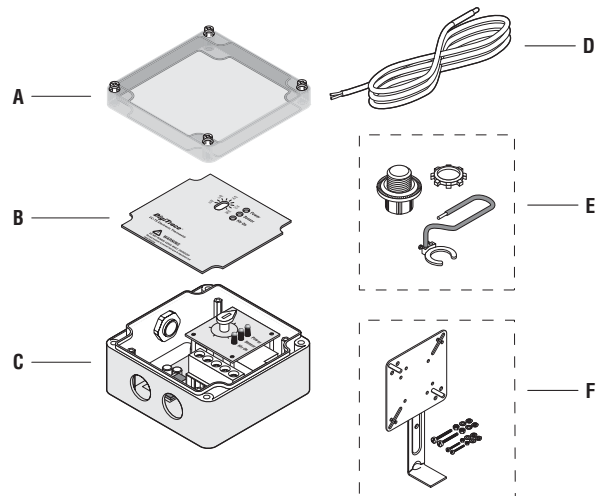


### Additional Materials Required

- Appropriate mounting fasteners
- MI cable grounding kit (for direct connection of Pyrotex heating cables)  
Catalog No: MI-GROUND-KIT

### Kit Contents

Item	Qty	Description
A	1	Lid
B	1	Wire cover
C	1	Box with electronics
D	1	One of the following: <ul style="list-style-type: none"> <li>• EC-TS-AMB – ambient sensor</li> <li>• EC-TS-10 – 10 ft sensor</li> <li>• EC-TS-25 – 25 ft sensor</li> </ul>
E	1	MI cable grounding kit (ordered separately; P000000279)
F	1	Pipe support bracket (optional; 707366)



### WARNING:

This component is an electrical device that must be installed correctly to ensure proper operation and to prevent shock or fire. Read these important warnings and carefully follow all of the installation instructions.

- To minimize the danger of fire from sustained electrical arcing if the heating cable is damaged or improperly installed, and to comply with the requirements of Tyco Thermal Controls, agency certifications, and the National Electrical Code, ground-fault equipment protection must be used. Arcing may not be stopped by conventional circuit breakers.

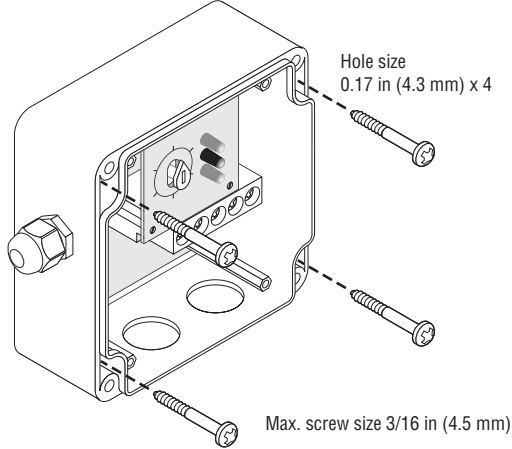
- Component approvals and performance are based on the use of Tyco Thermal Controls-specified parts only. Do not use substitute parts or vinyl electrical tape.
- The black heating cable core and fibers are conductive and can short. They must be properly insulated and kept dry.
- Damaged bus wires can overheat or short. Do not break bus wire strands when scoring the jacket or core.

- Keep components and heating cable ends dry before and during installation.
- Use only fire resistant insulation materials, such as fiberglass wrap or flame-retardant foam.

EC-TS-AMB, EC-TS-10, and EC-TS-25 Installation Instructions

1

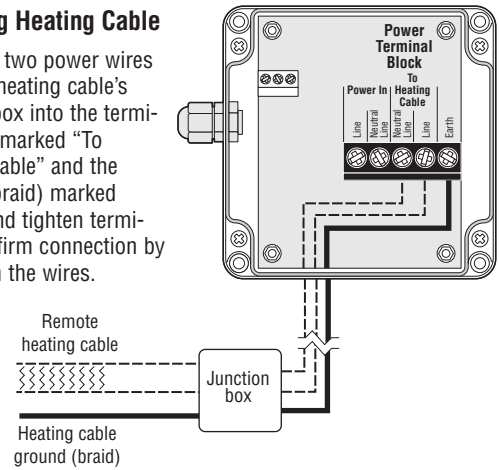
- Attach enclosure to the wall using the appropriate mounting fasteners.



2A Heating Cable using a Junction Box

Connecting Heating Cable

- Insert the two power wires from the heating cable's junction box into the terminal block marked "To Heating Cable" and the ground (braid) marked "Earth" and tighten terminals. Confirm connection by pulling on the wires.



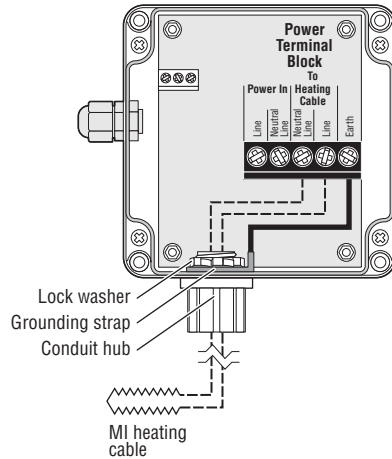
**Note:** You must bring grounding wiring from the MI junction box to the controller for the ground-fault circuit breaker to work properly.

2B Mineral Insulated Heating Cable using a Direct Connection without a Separate Junction Box

**Note:** To ensure the MI heating cable is properly grounded, all MI cables must be installed with a grounding kit, which is ordered separately (P000000279). Failure to use the grounding kit will void the warranty and can be a safety hazard by preventing normal operation of the ground fault circuit breaker.

- Insert the two heating cable wires into the terminal block marked "To Heating Cable" and the ground wire to "Earth" and tighten terminals. Confirm by pulling on the wires.

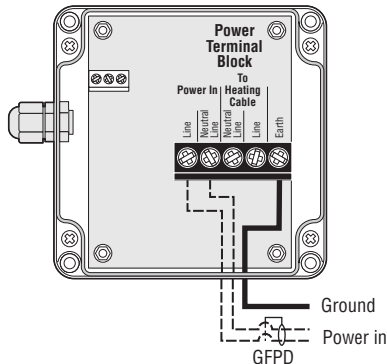
MI heating cable using direct connection



3

Connecting Incoming Power

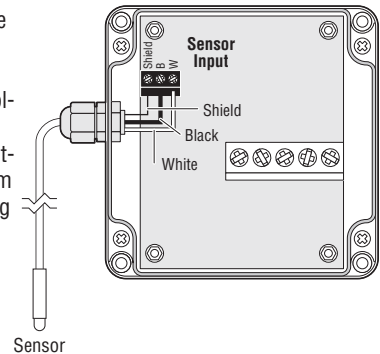
- Pull in power and ground wires, strip off 1/2" (3 mm) of insulation and terminate. Confirm by pulling on the wires.



4

Connecting Sensor

- Insert the three sensor wires into the terminal block marked "Sensor Input." Match the colors (White to W, Black to B), and tighten terminals. Confirm connection by pulling on the wires.

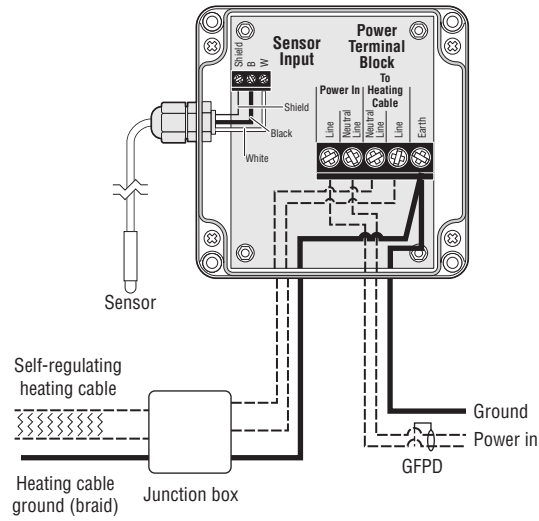


**5 Finished Wiring Diagram**

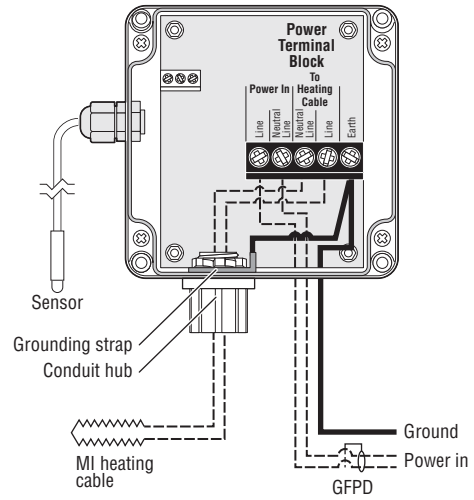
- Install wire cover.
- Dial in set point.
- Install lid.
- Leave these instructions with the end user for future reference.

Function	LED color	Description
Power	Green	When energized, indicates power to the controller
Sensor	Red	When energized, indicates shorted or open sensor
Htr On	Green	When energized, indicates power to the heating cable

**Heating cable using a junction box**



**MI heating cable using direct connection**



Tyco, DigiTrace, Pyrotenax and Raychem are trademarks or registered trademarks of Tyco Thermal Controls LLC or its affiliates.

---

**Worldwide Headquarters**  
**Tyco Thermal Controls**  
300 Constitution Drive  
Menlo Park, CA 94025-1164  
USA  
Tel (800) 545-6258  
Fax (800) 527-5703  
info@tycothermal.com  
[www.tycothermal.com](http://www.tycothermal.com)

**Important:** All information, including illustrations, is believed to be reliable. Users, however, should independently evaluate the suitability of each product for their particular application. Tyco Thermal Controls makes no warranties as to the accuracy or completeness of the information, and disclaims any liability regarding its use. Tyco Thermal Controls' only obligations are those in the Tyco Thermal Controls Standard Terms and Conditions of Sale for this product, and in no case will Tyco Thermal Controls or its distributors be liable for any incidental, indirect, or consequential damages arising from the sale, resale, use, or misuse of the product. Specifications are subject to change without notice. In addition, Tyco Thermal Controls reserves the right to make changes—without notification to Buyer—to processing or materials that do not affect compliance with any applicable specification.